



With a Couture Parisian background, inspired by the Atelier of Lesage, Victoria established her Company over 18 years ago. Her ultimate vision was 'to meet the highest standards possible, and to design with a sensibility that overreached other embroidered fabrics that she had seen on the market'.

18 years on and Victoria has worked in conjunction with some of the world's leading interior designers. Her work adorns 5 star luxury hotels, super yachts, and private homes around the world, from curtain leading edges, to paneled leather upholstered walling, to strikingly tailored dining chairs.

Each item is manufactured by carefully sourced and extremely skilled embroidery teams where the focus is on craftsmanship and quality. The company's 'bespoke' capability is renowned, their attention to detail and expert knowledge.

Victoria Bain

Victoria Bain

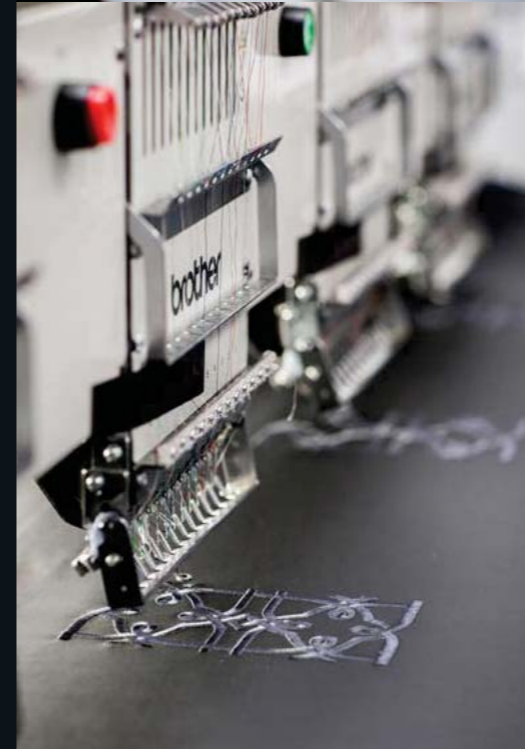
WWW.VICTORIABAIN.CO.UK

WHAT MAKES US SPECIAL

Victoria is obsessed with quality and detail but is also keen to illustrate the enormous capability of the 'stitch', its versatility and the fascinatingly rich textures that it can produce.

Victoria works with designers around the world, creating exceptional products, using ground breaking methods and exquisite craftsmanship. Leather over the years has been etched, laser-cut, and painted but embroidery had not been fully explored until now. This range therefore offers you a unique product. Leather presents a modern edge, combined with high durability, stunning upholstery application, wall panelling, and soft furnishing opportunities.

Bespoke embroidered options beyond this core Collection are also offered. Please do call Victoria Bain Embroidered Textiles or visit the Whistler Leather showroom for further details.





THE COLLECTIONS



LEADING EDGES

A stunning collection of designs applied to curtain leading edges in a variety of exquisite techniques. All designs can be custom coloured.



BEAUFORT



DESIGN DETAILS

Suitability: Curtain leading edge, upholstery

Digital design/Repeat: 20cm

Width of design: 15cm

Made to order: Minimum order 6m

Lead time: Approximately 5-6 weeks dependant on quantity

ELLICE



DESIGN DETAILS

Suitability: Curtain leading edge, upholstery

Digital design/Repeat: 8cm

Width of design: 12cm

Made to order: Minimum order 6m

Lead time: Approximately 5-6 weeks dependant on quantity





DELAUNEY



DESIGN DETAILS

Suitability: Curtain leading edge, upholstery

Digital design/Repeat: 10cm

Width of design: 16cm

Made to order: Minimum order 6m

Lead time: Approximately 5-6 weeks dependant on quantity

ROPE 1



DESIGN DETAILS

Suitability: Curtain leading edge, upholstery

Digital design/Repeat: 15.8cm

Width of design: 10.35cm

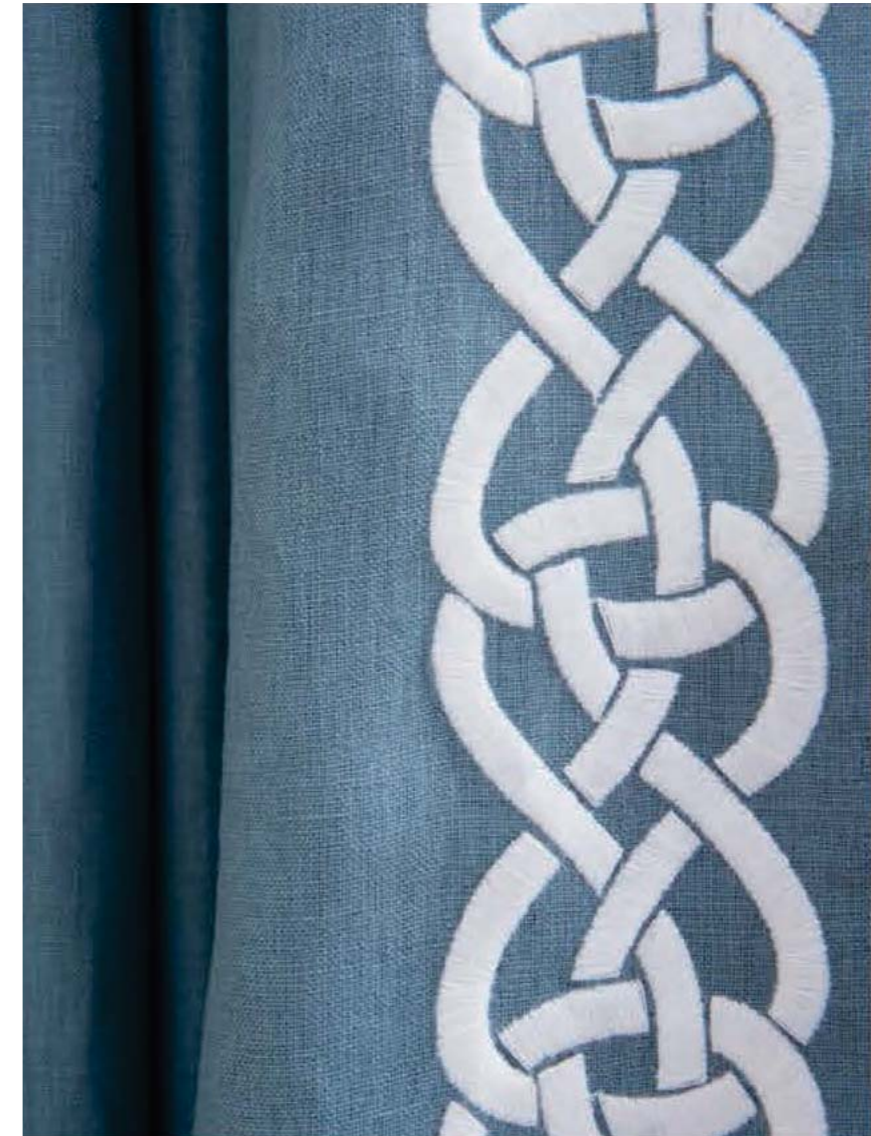
Made to order: Minimum order 6m

Lead time: Approximately 5-6 weeks dependant on quantity





ROPE 2



DESIGN DETAILS

Suitability: Curtain leading edge, upholstery

Digital design/Repeat: 9.8cm

Width of design: 8.17cm

Made to order: Minimum order 6m

Lead time: Approximately 5-6 weeks dependant on quantity

CALISTA FLORAL LINEN



DESIGN DETAILS

Suitability: Curtain leading edge, upholstery

Digital design/Repeat: 19.7cm

Width of design: 11.3cm

Made to order: Minimum order 6m

Lead time: Approximately 5-6 weeks dependant on quantity





CALISTA FLORAL VOILE



DESIGN DETAILS

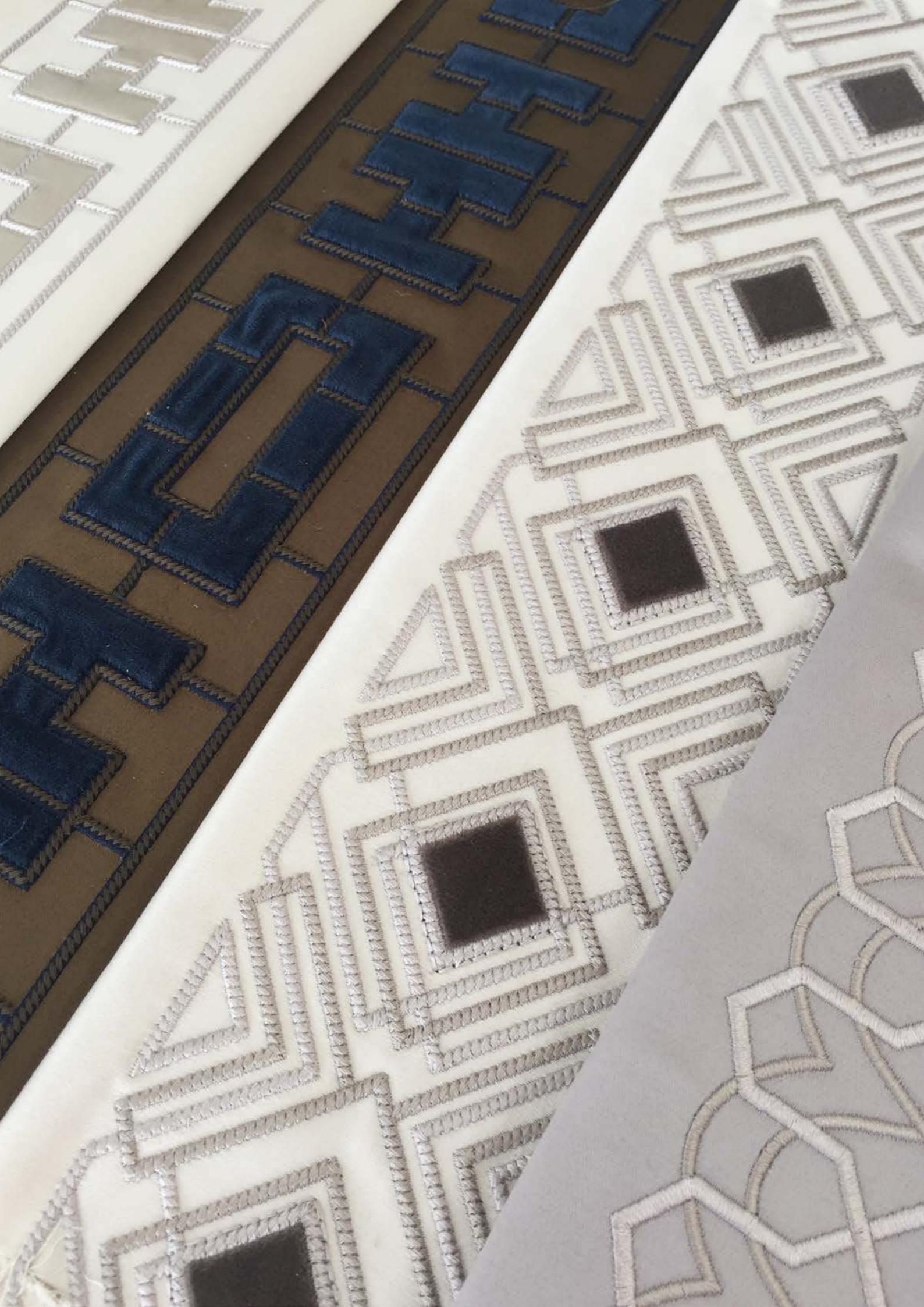
Suitability: Curtain leading edge, upholstery

Digital design/Repeat: 19.7cm

Width of design: 11.3cm

Made to order: Minimum order 6m

Lead time: Approximately 5-6 weeks dependant on quantity



THE NEW COLLECTION FOR 2019

Victoria's influences this season have derived from the 1920's Deco Period to the 'Embroiderie D'Or' of the 'Arts Marocain'.

Victoria's renowned wide width designs feature as always, but teamed alongside a newer smaller scale that can now be appropriately used as a trim.

Each design is beautifully finished by our expert embroidery team, chosen specifically for their long term association with the Paris couture fashion houses.

This Collection forms the most experimental of Victoria's collections to date.

Featured from LH to RH: Chinese Lattice Silk, Chinese Lattice Velvet, Imperial and Artemesia.



EMBROIDERED TAPES

A standard range of hand woven and both hand embroidered and machine worked upholstery.



BOUTALA



DESIGN DETAILS

Suitability: Curtain leading edge, upholstery, soft furnishing

Digital design/Repeat: 15.5cm

Width of design: 16cm

Made to order: Minimum order 6m

Lead time: Approximately 10-11 weeks dependant on quantity

GEOMETRIC



DESIGN DETAILS

Suitability: Curtain leading edge, upholstery, soft furnishing

Digital design/Repeat: 23.5cm

Width of design: 18cm

Made to order: Minimum order 6m

Lead time: Approximately 12 weeks dependant on quantity





Whistler

LEATHER

VICTORIA BAIN AT WHISTLER LEATHER

Victoria Bain Embroidered Textiles at Whistler Leather brings an exciting collaboration, a pairing of two companies whose philosophy embraces excellence.

Whistler's specialism in high grade leather for the design industry with its durable flat surface and excellent colour fastness retains the embroidery excellently and it can even be used in higher traffic areas such as hotels and restaurants. Victoria's in depth knowledge on chose of thread colour and pattern adds a depth and texture to the Whistler hides, inspiring new uses for this classic material.

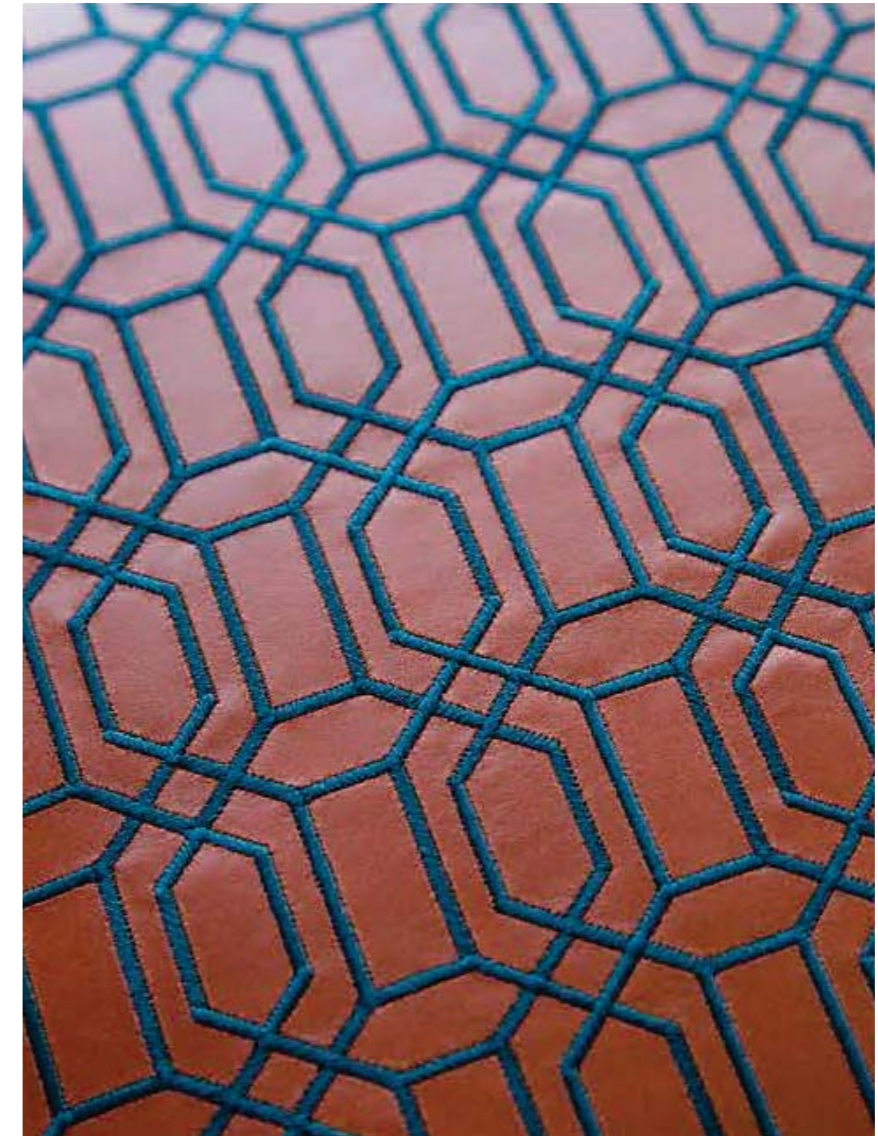
The range comprises of Geometrics, carefully considered, rhythmical repeats which would suit large surfaces such as wall panels, head boards and upholstery. Along with a series of customised Monograms, demonstrating a 'bespoke' offer.

3 colour palettes exist - 'Colourful' incorporating tan, gold, taupe, tangerine, teal and dark cherry. 'Neutral' uses cream, and beige for a subtle easy to work with palette. Dark Charcoal a mix of sophisticated black and grey, and a tone on tone theme, allowing for a light textural relief.

All designs can be custom coloured.



CLAYDON



DESIGN DETAILS

Suitability: Curtain leading edge, upholstery

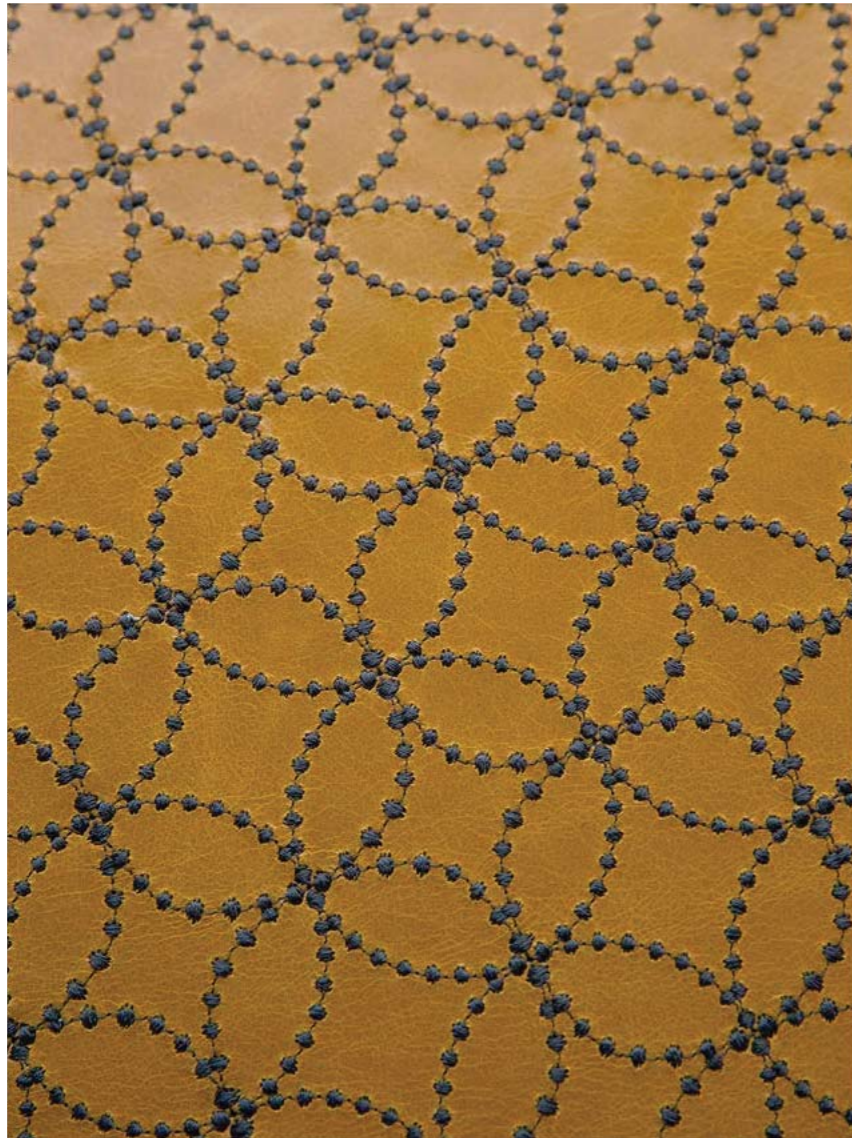
Digital design/Repeat: 5cm

Width of design: 5cm

Made to order: Minimum order 6m

Lead time: Approximately 5-6 weeks dependant on quantity

ALIX



DESIGN DETAILS

Suitability: Upholstery, headboards, walling, soft furnishing

Digital design/repeat: 5cm

Width of design: 5cm

Made to order: Minimum order 160cm x 44cm embroidery area

Lead time: Approximately 8 weeks dependant on quantity



ANKARA



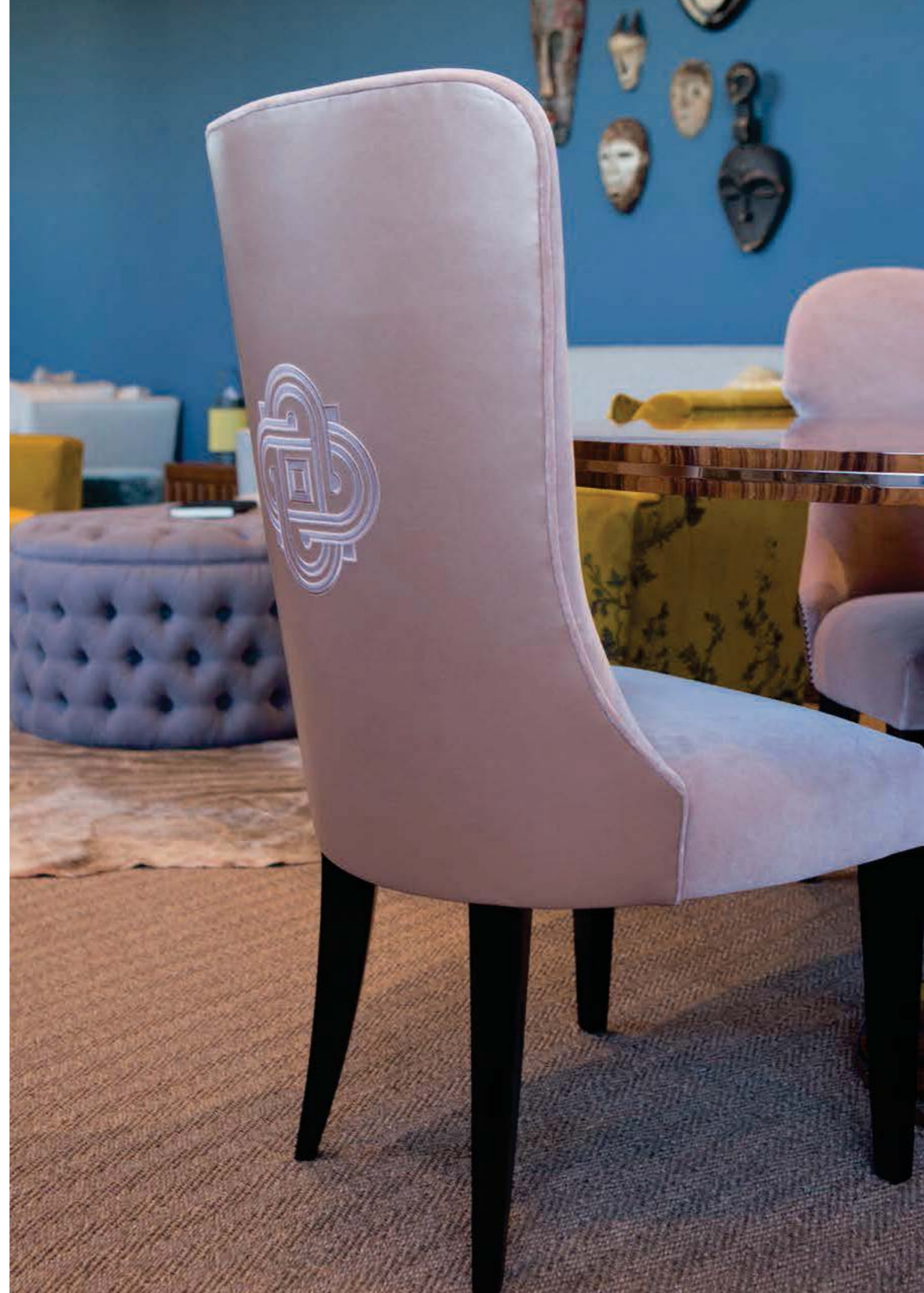
DESIGN DETAILS

Suitability: Walling, upholstery

Height of design: 20cm

Width of design: 20cm

Lead time: Approximately 5-6 weeks dependant on quantity





EMILIE

DESIGN DETAILS

Suitability: Upholstery

Height of design: 11cm

Width of design: 33cm

Lead time: Approximately 9-10 weeks dependant on quantity



BESPOKE PROJECTS

In an age of mass production the desire for individuality has become more prominent. Victoria Bain offers a 'bespoke' service, allowing for a unique and exclusive end product. Each item is manufactured by carefully sourced and extremely skilled embroidery teams where the focus is on craftsmanship and quality.

The Company works closely with the client at every stage and have covered prestigious projects such as Claridges Hotel, Cliveden Hotel, amongst others; to projects specified by superyacht designers such as Winch Design and H2 Yacht Design; to residential projects for high net worth private individuals around the world.

The Studio can develop work from sketches to accurate CAD designs. Colour, detail and scale are all discussed at the initial stage. The design is then converted through computerised embroidery software in order to develop a highly accurate stitch out. A sample strike-off is then created for client approval. Once approved only then will production commence. Dependent on complexity of the design lead times can vary from 4-12 weeks.





From geometric to floral motifs our bespoke offer allows for stunning accents. From soft furnishings, as illustrated here through our 'branch design', through to upholstery and walling; from a single unit design to a repeat or one-off design created for a walling feature. With a multitude of thread colours and thread types to choose from.

We can also offer a range of fire-retardant threads for hospitality work and exterior threads for superyacht work.



WINCH DESIGN
PROJECT REFERENCE:
CORAL WAVES

A superyacht with an atypical and compelling boat enlivened with artwork. Abstract and arresting applique motifs, to tie in with this brief, were created and applied onto both upholstery and soft furnishing within this internal living space.



WINCH DESIGN
PROJECT REFERENCE: CLOUD 9

A custom request to create striking navy coral motifs using an applique technique for these external dining chairs. Cloud 9 stole the show at last year's Monaco Yacht Show and was up for an award in Florence.



H2 YACHT DESIGN SCHLOSS MONCHSTEIN

Schloss Monchstien is a 5 star luxury hotel set in Salzburg. These newly refurbished and stunningly styled executive suites present a classic and timeless ambience.

Detail was at the fore on this project and our stunning Delauney design was re-created as a feature on the back of each bedroom's stylish chairs.

